



Local Authority Social Engagement

David Regan

Director, Manchester Joint Health Unit



Overview

- Manchester context
- Manchester Joint Health Unit
 - Health Research & Intelligence Team
 - Example of Research Project
- Manchester City Council

Population: - 458,100 people (2007 mid-year estimates)

- Total population has increased since 2001

Geography: - 22 miles in length

- 44.7 square miles in total

- 32 wards

Diversity: - 29.7% of the population from Black and Minority Ethnic communities

- 150 languages spoken in local schools

Social and Economic Profile

- Deprivation
 - Manchester is the fourth most deprived local authority area in England.
 - Over half (52.0%) of Super Output Areas (SOAs) in the city are in the most deprived 10% in England.

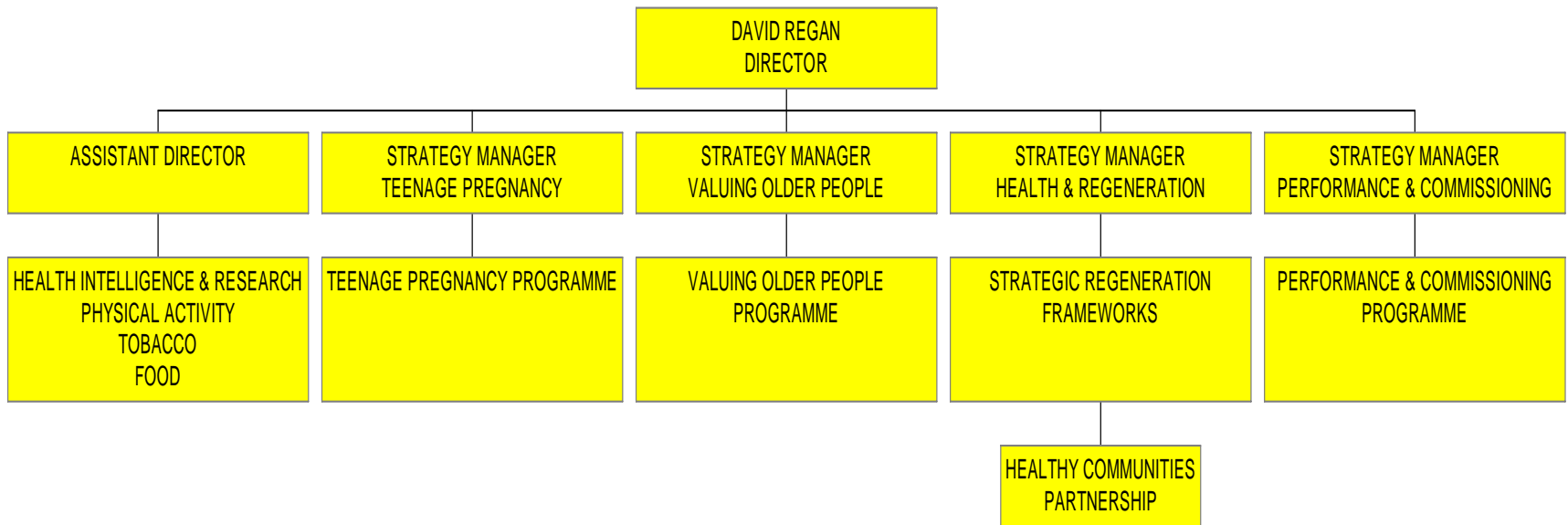
(Indices of Deprivation 2007)

- Unemployment rate now stands at 6.7% compared to 4.8% in the UK (January 2009)
- 34,625 people claiming Incapacity Benefit and 49.9% of claimants are suffering from mental ill-health.
(England = 41.5%)

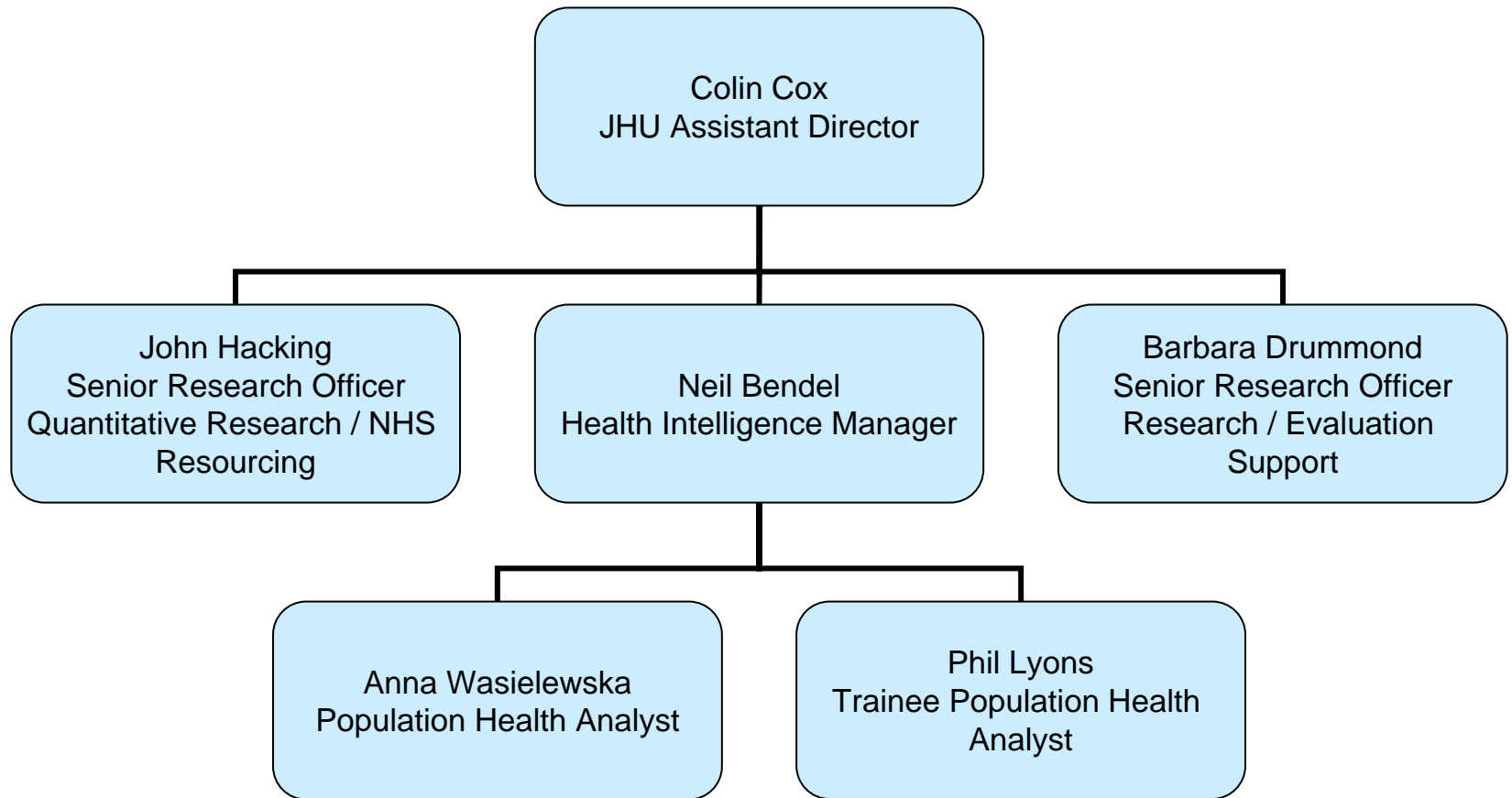
Establishment of the Joint Health Unit (JHU)

- Feasibility Study by Professor David Hunter and Susan O'Toole
- Timing is everything (2002)
 - National Policy Drivers
 - Local NHS reorganisation
 - Poor statistics and availability of funding
 - Healthy Cities
 - Friends again!
- Core Business:
 - “Drive others to tackle health inequalities within Manchester and between Manchester and the rest of the country”

Joint Health Unit Structure



Manchester Joint Health Unit Health Research and Intelligence Team



Key remit

- Provides an intelligence 'hub' for the city which includes information, intelligence and research to support the development, monitoring and evaluation of public health work across the city.
- Tasked to support the work of the City Council and NHS Manchester in delivering the health and wellbeing elements of the Community Strategy.
- Leading on the co-ordination and production of the Manchester Joint Strategic Needs Assessment (JSNA) to inform future commissioning.

Examples of recent work

- Planning and construction of a Joint Strategic Needs Assessment for Manchester.
- Analysis of data to support the development of Manchester's Health Inequalities Strategy.
- Evaluation of the Alcohol A&E brief interventions pilot in Central Manchester NHS Trust.
- Research concerning equity audit of NHS allocations.
- Contributing to performance management of key Local Area Agreement targets.

- All Age All Cause Mortality (AAACM)
 - Alcohol Related Admissions
 - Childhood Obesity
 - Under 18 Conceptions
 - Self Reported Health and Well Being
-



New Dynamics of Ageing

- A 7-year multidisciplinary research initiative to provide a sound evidence base for policy and practice aiming to improve quality of life for older people
- A unique collaboration between all five UK research councils
- A joint fund of £10 million was launched in 2006 with 3 funding rounds, (final allocations made early 2009)
- The full range of disciplines covered by the five research councils are represented in the 18+ projects commissioned
- Largest and most ambitious research programme on ageing ever mounted in the UK



CALL ME

Community Action in Later Life - Manchester Engagement



- A 3-year collaboration between Keele University and the Joint Health Unit through the Valuing Older People programme (2007- 2010)
- A participatory, community-led research programme in 4 Manchester wards – Cheetham, Moss Side, Ardwick and Newton Heath which aims to:
 - to assess the impact of different community initiatives on active ageing
 - to identify the social and psychological processes involved in promoting active ageing
 - to develop policy recommendations for promoting active ageing in disadvantage communities
- The project seeks to move away from the assessment of problems towards a new focus of community action
- Through the local partnership, it seeks to leave a legacy of better coordinated opportunities for those communities

Manchester City Council

- Duty to engage and consult
- Opinion research to inform decision-making
 - Quality of Life surveys
 - Place survey

Key Contacts

Sarah Henry

Head of Research and Intelligence

s.henry@manchestser.gov.uk

David Regan

d.regan@manchestser.gov.uk

www.manchester.gov.uk/health/jhu

www.manchetser.gov.uk/vop

Manchester: The Challenge

